

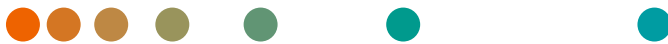
MULTIX Impact and MULTIX Impact C  
with myExam Companion

# Strengthen your image

[siemens-healthineers.com/multix-impact](https://siemens-healthineers.com/multix-impact)



New  
VA21  
edition

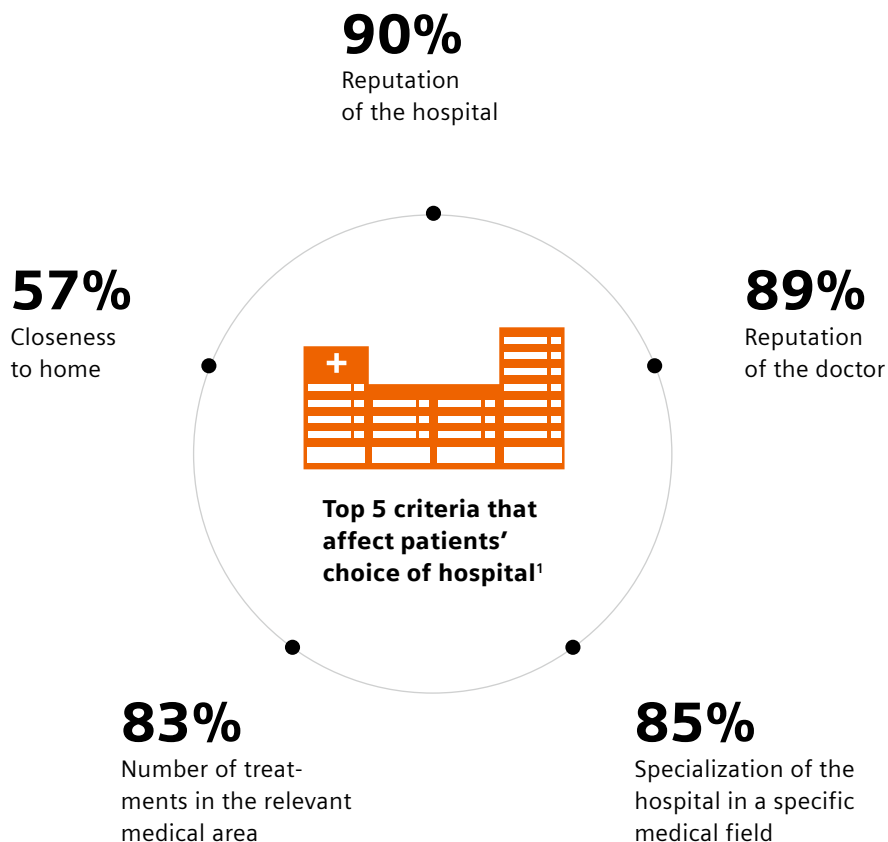


**SIEMENS**  
Healthineers 

# Reputation matters

When it comes to choosing a healthcare provider, patients care about more than just geographical proximity. In these days of online resources and patient reviews, a good reputation can make all the difference. To maintain or even boost a hospital's reputation, it is crucial to use modern equipment and have a friendly, helpful staff. Institutions that fulfill those criteria are likely to attract more referrals and patients and enjoy greater overall success.

What's more, myExam Companion launched the era of intelligent imaging. It guides operators through any scan procedure, so they can interact easily and naturally with both patient and technology to generate consistent, comprehensive results.



<sup>1</sup> Forsa (2020): KKH Forsa-Umfrage "Krankenhaus-Wahl" [article in German]. [Accessed July 2021].



## MULTIX Impact and MULTIX Impact C

# Strengthen your image

Radiography is a central daily touchpoint between patients, referring physicians, and your institution. Their perception of you can enhance – or hinder – your success. What if you could strengthen your image with every image you acquire?

Our answer for both floor-mounted and ceiling-mounted radiography: MULTIX Impact and MULTIX Impact C. High-end technology and user-assisting system intelligence with myExam Companion – at an economical price. Each system combines the well-established and excellent imaging quality of MULTIX Impact with brand-new staff- and patient-friendly features.

**Your benefits? Reliable performance and high-quality on-time care for diverse patients, even at peak times – to strengthen your image with everyone involved.**

### Discover MULTIX Impact radiography systems

At a glance	4
Strengthen your image with patients	6
Strengthen your image with staff	8
Strengthen your image with referring physicians	12
See anatomical details	15
Technical specifications MULTIX Impact	16
Technical specifications MULTIX Impact C	18
A system tailored to your needs	20
Benefit from innovative services	22
Fleet Level Benefits	23

## MULTIX Impact radiography systems

# At a glance



### **Floor-mounted or ceiling-mounted? Your choice.**

The MULTIX Impact Family gives you the flexibility to match your radiography system to your space and to your operational and clinical needs. Whether you prefer floor-mounted or ceiling-mounted, MULTIX Impact and MULTIX Impact C stand for high-end technology and user-assisting system intelligence at an economical price.

### **Intelligent imaging with myExam Companion**

myExam Companion launched the era of intelligent imaging. With built-in knowledge it allows you to unlock the full potential of your medical imaging modality while intuitive interfaces simplify system operation. At the same time, intelligent guidance helps you navigate medical imaging procedures with ease.

### **Sound diagnoses with AI-Rad Companion<sup>1</sup>**

AI-Rad Companion is a family of vendor-neutral, multi-organ augmented reading solutions designed to automatically prepare clinical images to be interpreted by radiologists and/or clinicians.

<sup>1</sup> AI-Rad Companion for MULTIX Impact and MULTIX Impact C is currently under development; is not for sale in the U.S. Its future availability cannot be guaranteed.



## Strengthen your image with patients

MULTIX Impact and MULTIX Impact C improve the imaging experience for your patients and feature dose-efficient technology, a flat elevating tabletop<sup>2</sup>, and a modern design. Designed for patient well-being, MULTIX Impact systems enable workflows that optimize patient interaction – and take care of little patients, too.

## Strengthen your image with staff

MULTIX Impact systems are designed to make working less stressful and more satisfying. Their ergonomic design and simple workflows help put the focus back on your patients. Both systems are motorized for less physical strain on staff, while the tube touchscreen and myExam 3D Camera<sup>2</sup> offer easy operation and more control.

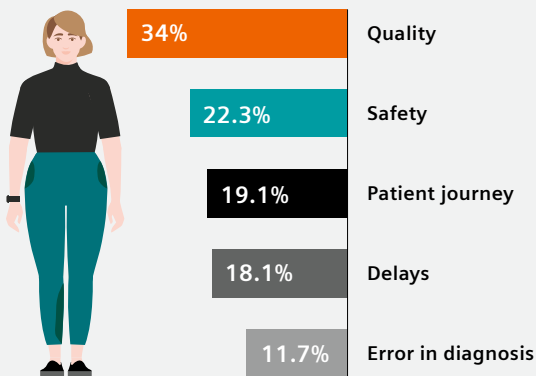
## Strengthen your image with referring physicians

The MULTIX Impact Family is built for consistent outcomes, fast results, and peak system availability. System uptime is assured with premium components and an innovative service concept. MULTIX Impact also promotes standardization, reducing user-dependent variations and enabling consistently high image quality.

<sup>2</sup>Option.

# Strengthen your image with patients

## Patients care about their experience



The most common complaints from radiology patients<sup>1</sup> concern quality, safety, patient journey, and delays. Errors in diagnosis are less frequently sources of dissatisfaction for patients. This shows that patients care a lot about their experience and demand patient-centered care.

Uncomfortable examinations, strained staff, and outdated technology are all reasons that patients might avoid one institution in favor of another. MULTIX Impact radiography systems feature a welcoming design and advanced technology that help create a positive experience.

## Comfortable imaging for your patients

Patient well-being is at the heart of the MULTIX Impact family. The ergonomic design, elevating table<sup>2</sup>, and free-floating flat table-top enable easy patient access and transfer. Impact Illuminate<sup>2</sup> indicates the system status with colored lights so patients can follow the imaging process, which helps them feel that they are in good hands.

## Stay in contact

The integrated myExam 3D Camera<sup>2</sup> helps you set up each examination accurately and stay in contact with your patients. This can lead to better images and higher patient satisfaction, potentially reduce the number of retakes, and lessen the dose per image. Good patient contact also increases confidence in challenging cases – with children, elderly people, or patients in pain.



<sup>1</sup> van den Berg PF, et al. (2019): Patient complaints in radiology: 9-year experience at a European tertiary care center.

<sup>2</sup> Option.



MULTIX Impact Family now offers Smart Remote Control<sup>2</sup>

## More time at your patient's side

MULTIX Impact and MULTIX Impact C offer positioning aids that allow you to focus on your patients, not on the technology. The tube-mounted touchscreen lets you remain at the patient's side while setting up the examination, so you can answer questions and provide reassurance. The Positioning Guide and rotating tube display help you get the image right the first time.



## Keep the control in your hands

With Smart Remote Control (SRC)<sup>2</sup>, our new smartphone-based workflow for MULTIX Impact, you can access the major functions of your imaging system on the fly – enabling you to stay in touch with your patients. SRC lets you clearly identify patients by scanning their QR or barcode. It also allows you to edit the list of Organ Programs (OGPs) for a study on the go and use a single hand to adjust major parameters.

## Safe and efficient pediatric examinations

With MULTIX Impact and MULTIX Impact C, you can assure parents that their children are in good hands. Children are different, and their small bodies are more sensitive to radiation. Dedicated pediatric Organ Programs achieve high image quality at low dose. And with the myExam 3D Camera you can make sure that children stay in the right position – and potentially avoid the additional radiation that would come with a retake.

# Strengthen your image with staff

## Awkward work positions are a heavy burden for technologists

 **81%**

spend over two hours per day in awkward positions



Among the most frequently cited reasons for musculoskeletal symptoms:

Patient transfers

Heavy equipment

Fixed table height

In a survey of 309 technologists,<sup>1</sup> factors related to patients and imaging equipment were considered to be the primary causes of musculoskeletal symptoms. Among the most commonly cited factors were patient transfers and heavy imaging equipment.

Dissatisfaction at work can lead to higher staff turnover and lower productivity that can have a financial impact on your department. MULTIX Impact radiography systems are designed with hospital staff in mind – allowing your team to work under easier, safer, more satisfying conditions.

## Easy operation – at your fingertips

MULTIX Impact systems enable excellent outcomes while making operating the system as easy as possible – even for less experienced staff. The systems have a tube-mounted touchscreen so you can stay with the patient while setting up examination parameters inside the examination room, which simplifies workflows and increases time with patients.

## Simplify preparation and positioning

With the clear Positioning Guide on tube touchscreen and workstation of MULTIX Impact Family, you can position patients with precision and confidence – even for challenging examinations. Body-part graphics make it easy to select the right OGP for each case, and content sensitivity help provides targeted problem-solving for smoother workflows.



<sup>1</sup> Shubayr N, Alashban Y (2021): Musculoskeletal symptoms among radiation technologists in Saudi Arabia: prevalence and causative factors.





## **Fast and intuitive to learn – in only 10 hours of training<sup>2</sup>**

Both MULTIX Impact and MULTIX Impact C are so intuitive to handle that they only need about ten hours of online training<sup>3</sup> via Siemens Healthineers' learning platform PEPconnect plus remote application training<sup>4</sup> – so users can quickly learn the system and start operating it with confidence. The customized education concept blends in with your workflow and matches all experience and skill levels.

## **Easy acquisition of high-quality images – with flexible detectors**

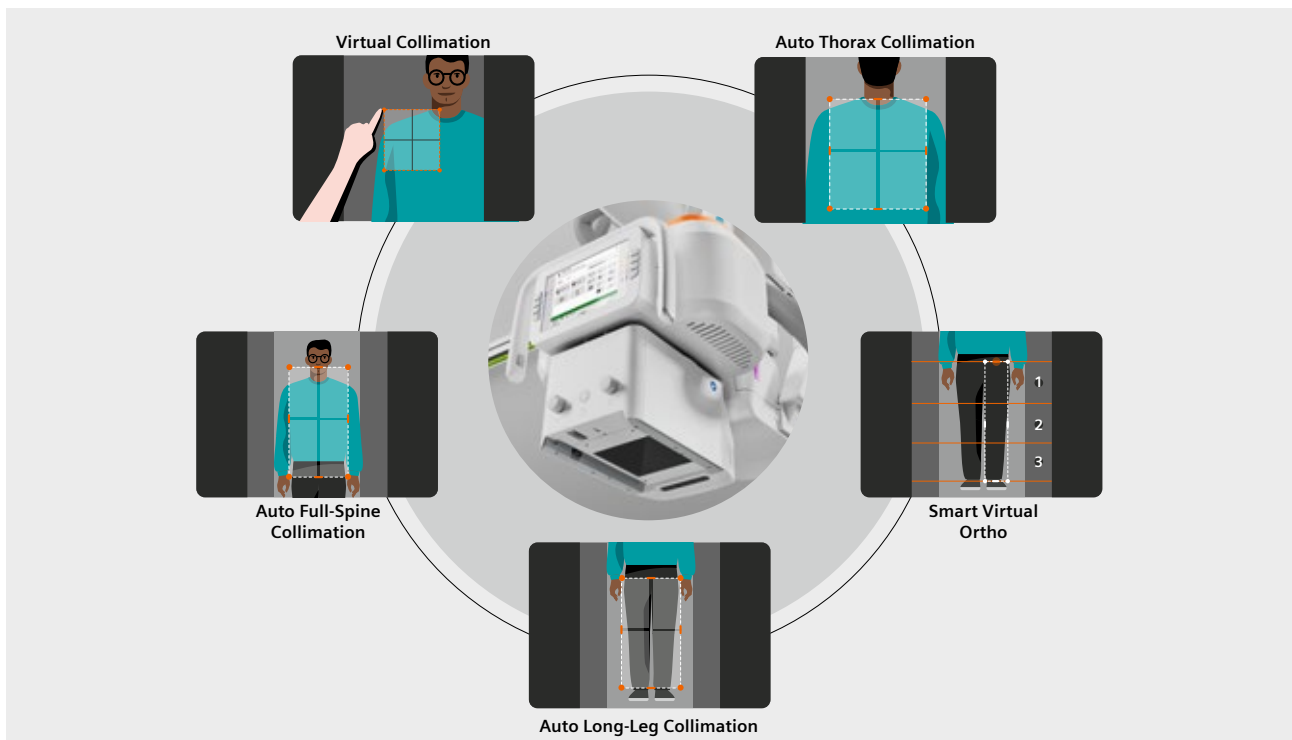
MULTIX Impact systems work with either the full-sized Core XL or the well-known MAX wi-D<sup>5</sup> (wireless detector). Their wireless design, handles, and in-tray charging support flexible use and enable faster and more relaxed workflows.

<sup>2</sup> Valid for basic functions of the system. Advanced features require additional training.

<sup>3</sup> Online education material in PEPconnect is available 24/7.

<sup>4</sup> An existing connection to our SRS infrastructure and an existing service contract that includes this service offering are prerequisites for remote application support. A two-day on-site application training is available as an option. Employees still have access to the online education material.

<sup>5</sup> Option.



## User-assisting system intelligence in MULTIX Impact Family

The myExam 3D Camera<sup>1</sup> always keeps the patient in focus, provides reassurance, and enables myExam Collimate to provide access to a number of pioneering functionalities:

### Virtual Collimation<sup>1</sup>

The live image from the myExam 3D camera provides you with a direct view of the collimation field displayed on the patient. This allows you to quickly collimate or perform adjustments at the workstation right before X-ray exposure, which means less need to walk back and forth and reduces the time that the patient has to remain still.

### Smart Virtual Ortho<sup>1</sup>

Using the live image from the myExam 3D Camera, Smart Virtual Ortho allows you to accurately set the start and end point of the imaging. Patient movements can be detected quickly to prevent unnecessary retakes and ease the burden on orthopedic patients. With Auto Stitching, up to four single images are automatically acquired and processed into a single image, leaving more time for patient care. Smart Virtual Ortho helps you easily judge whether you can perform an exam with fewer images – which can help reduce the dose for your patients.

### Auto Collimation<sup>1</sup>

Auto Thorax, Auto Long-Leg, and Auto Full-Spine Collimation are AI-based functionalities that automatically detect the region of interest and set the appropriate collimation. This helps you deliver thorax, long-leg, and full-spine images with ease. You can focus on your patients and their well-being – while the system takes care of everything else.

### Auto TOD Measurement<sup>1</sup>

The new Auto TOD Measurement for orthopedic examinations enables a more accurate assignment of the table-object distance (TOD) and relieves you of time-consuming and complicated manual measurements. The myExam 3D Camera automatically detects the dimensions of the patient's body and sets the correct TOD accordingly.

<sup>1</sup> Option.



## System motorization and automation – less strain on staff

Both MULTIX Impact systems come with powerful solutions for automation and motorization – providing optimal support for radiographers' daily routine.

### Strong motorization

In MULTIX Impact and MULTIX Impact C, the table<sup>1</sup> and Bucky wall stand<sup>1</sup> are fully motorized. The high degree of motorization enables easier system positioning and reduces the physical effort required to prepare an examination. Your staff will experience less physical burden – and more ease in every examination.

### MULTIX Impact with SmartMove – accelerates your workflows

The floor-mounted MULTIX Impact offers SmartMove<sup>1</sup> for a high degree of system automation: With SmartMove, a virtually unlimited number of system positions for table and Bucky wall stand<sup>1</sup> examinations can be predefined and stored. With the push of a button, MULTIX Impact moves into a programmed position. In short: The system finds its way to an accurate image while you focus on your patient.

### MULTIX Impact C – with SmartPositioning

With the ceiling-mounted MULTIX Impact C, you can store auto-positions of all motorized system parts for each OGP individually. With the push of a button, the system will move to the OGP-linked position automatically, and you can still fine-tune the position of the tube manually. SmartPositioning<sup>1</sup> in MULTIX Impact C provides smoother, more relaxed workflows – and brings more ease into preparing and setting up the examination.

# Strengthen your image with referring physicians

Delays in reports and insufficient image quality can impact your relationship with referrers

Referring physicians who consider it "important"/"very important" to receive accurate and timely reports:

**62%**

Orthopedic surgeons who rate image quality as "very important" for their surgery planning:

**44%**



Referring physicians place a lot of importance on receiving reports on time. High image quality is a key concern, especially for orthopedic surgeons, who rely on accurate images for their surgery planning.<sup>1</sup>

Satisfaction of referring physicians declines when unexpected downtime or inconsistent image quality delays the delivery of results. MULTIX Impact radiography systems were built to deliver peak system availability and produce fast and reproducible high-quality results every time.

## Outstanding reliability, availability, and cybersecurity

Your radiography system is a key asset in your imaging value chain. This is why the comprehensive Siemens Healthineers service concept aims to optimize system availability. Preventive maintenance addresses issues before they become a problem. Safety checks help you comply with guidelines and regulations, and certified OEM spare parts keep your system running as it should. You will benefit from remote services and updates<sup>2</sup> that allow you to schedule them for when it's most convenient. And a comprehensive cybersecurity concept makes sure your radiography systems stay protected in a connected world.



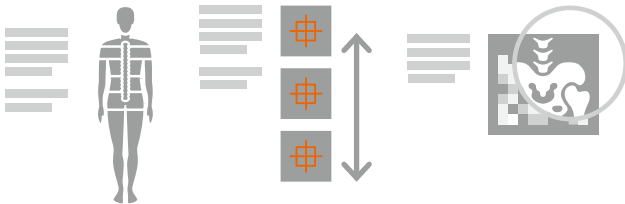
<sup>1</sup> HealthManagement.org (2016): What Referring Physicians Demand from Radiology.

<sup>2</sup> A connection to our SRS infrastructure is a prerequisite.



## Fast and standardized results

With the system guiding you through the entire imaging process, our latest radiography systems enable fast digital imaging cycles, from registration to examination to postprocessing. Operating MULTIX Impact and MULTIX Impact C is intuitive, so you and your team can get up to speed fast and be confident of delivering high image quality every time.



## Tailored images, delivered on time

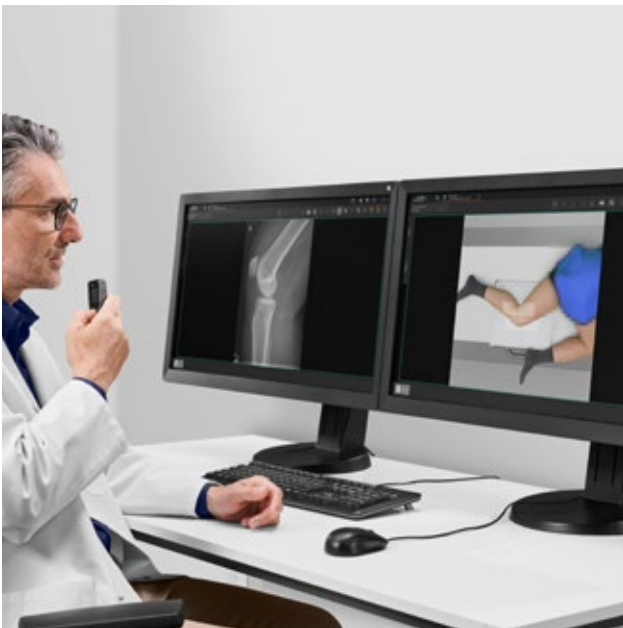
MULTIX Impact and MULTIX Impact C offer a wide range of preconfigured Organ Programs comprising imaging and workflow parameters for different body parts and imaging sequences. Body-part graphics displayed on the workstation's user interface make it easy to select the right OGP. The programs accelerate your workflows and minimize errors so radiologists will receive the high-quality images they need to deliver robust diagnoses on time.

## Your image, your flavor

All OGPs offer up to four preconfigured image flavors so radiologists can work with images in their preferred look and feel. Adjusting the flavor takes only a single click and is processed in three to four seconds.

## Reduce user-dependent variations in orthopedic exams

MULTIX Impact and MULTIX Impact C come with new functionalities that ease your reading routine: Smart Virtual Ortho<sup>1</sup> and Auto Long-Leg and Full-Spine Collimation<sup>1</sup>. These pioneering functionalities enable a high degree of standardization in your imaging results and reduce user variations in image acquisition. Reproducible imaging results allow you to achieve a higher quality standard, especially in your orthopedic images. This makes reading faster, easier, and more consistent.



## See more of your patient than just the X-ray image

Enabled by the myExam 3D Camera<sup>1</sup>, Hybrid Image Documentation<sup>1</sup> (HID) provides an optional photographic live image of the patient in addition to the X-ray image. This allows you to retrace and double-check diagnostic information on the X-ray image (like labeling or selection of an OGP) and analyze correct patient positioning for internal audits of image quality or to formulate a response to patient complaints.

<sup>1</sup> Option.



Full-Spine AP Upright

Study ID: 5aac009

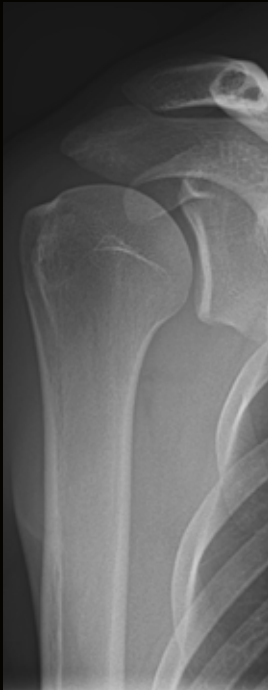
# See anatomical details with high image quality

Excellence in radiography applications



Chest AP

Study ID: 5aac766



Shoulder AP

Study ID: 5aac765



L-Spine AP

Study ID: 5aab975



Hand AP

Study ID: 5aab981



Knee AP

Study ID: 5aab974



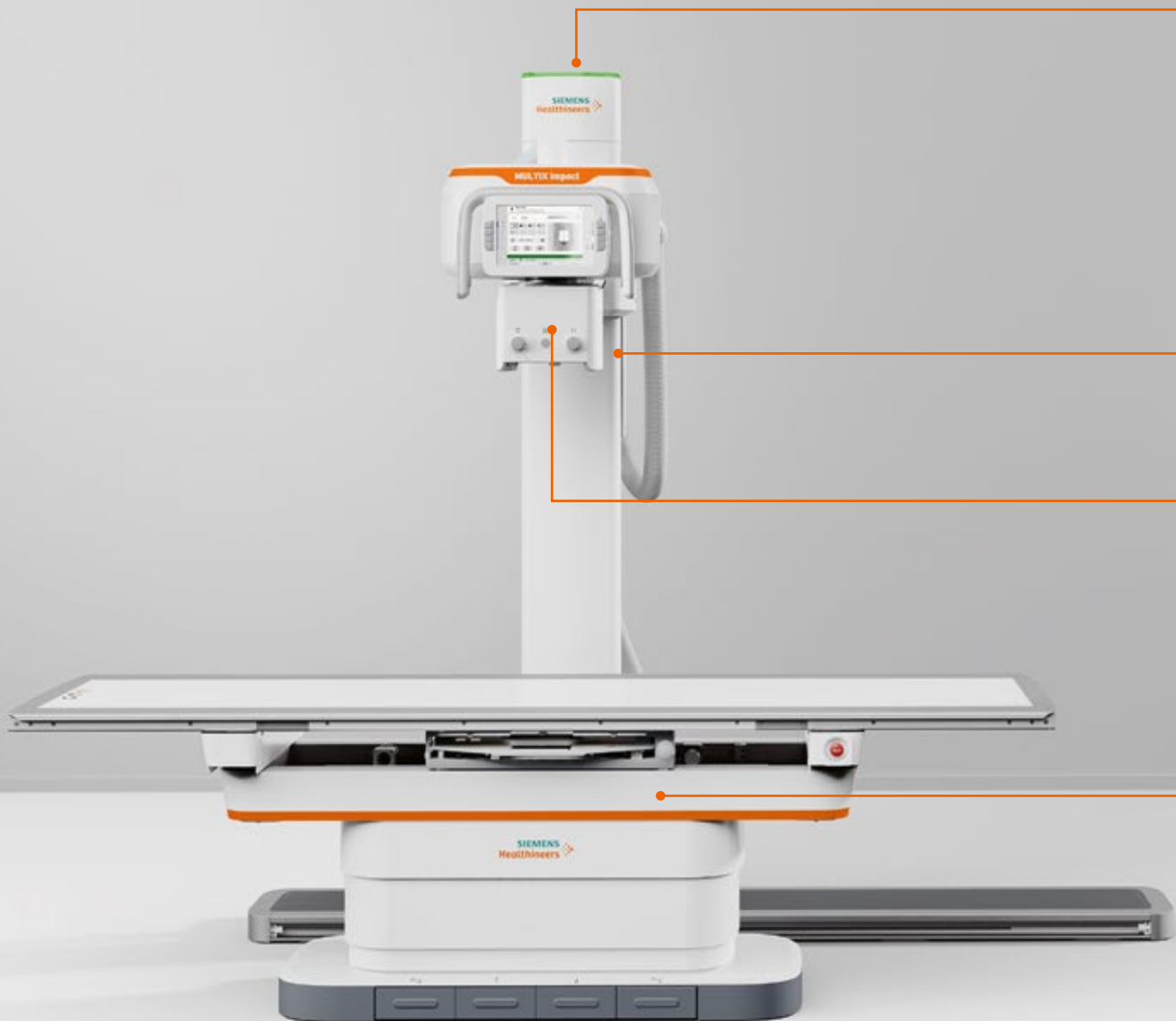
Foot AP

Study ID: 5aab965



Ankle AP

Study ID: 5aab961



**Hybrid Image Documentation<sup>1</sup>**  
 Photographic live image of the patient for an optional diagnostic reference



**SmartMove<sup>1</sup>**  
 Virtually unlimited positions can be used for table and Bucky wall stand<sup>1</sup> examinations



# Technical specifications: MULTIX Impact



## Impact Illuminate<sup>1</sup>

Indicates the system status

## Bucky wall stand (BWS)

- Automatic detector tracking (BWS mode)<sup>1</sup>
- Vertical travel range: up to 143.5 cm (56.5")
- Low central beam height: 31.5 cm (12.4")
- Fixed detector Core static<sup>1</sup>

## Floor-mounted tube

- Motorized collimator<sup>1</sup>
- SmartMove<sup>1</sup>
- 10" touch user interface

## myExam 3D Camera<sup>1</sup>

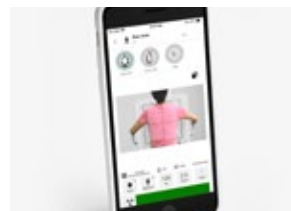
- Virtual Collimation<sup>1</sup>
- Smart Virtual Ortho<sup>1</sup>
- Auto Thorax Collimation<sup>1</sup>
- Auto Long-Leg and Full-Spine Collimation<sup>1</sup> for standing examinations at the BWS
- Auto TOD Measurement<sup>1</sup>
- Live camera image

## Table<sup>1</sup>

- Automatic tube tracking (table mode)<sup>1</sup>
- Adjustable height<sup>1</sup>: from 51.5 to 90 cm (20.3" to 35.4")
- High weight capacity: 300 kg (661 lbs)
- Comfortable patient positioning on flat tabletop

## Wireless detectors

- MAX wi-D<sup>1</sup> (35 cm x 43 cm/ 14" x 17") with detector sharing
- Core XL (43 cm x 43 cm/ 17" x 17")



## Smart Remote Control<sup>1</sup>

- Access major imaging system functions on the go
- Live-stream of patient status

<sup>1</sup> Option.

# Technical specifications: MULTIX Impact C

## Impact Illuminate<sup>1</sup>

Indicates the system status

## Ceiling-mounted tube

- 10" touch user interface
- Motorized collimator
- SmartPositioning<sup>1</sup>

## myExam 3D Camera<sup>1</sup>

- Virtual Collimation<sup>1</sup>
- Smart Virtual Ortho<sup>1</sup>
- Auto Thorax Collimation<sup>1</sup>
- Auto Long-Leg and Full-Spine Collimation<sup>1</sup> for standing examinations at the BWS
- Auto TOD Measurement<sup>1</sup>
- Live camera image

## Bucky wall stand (BWS)

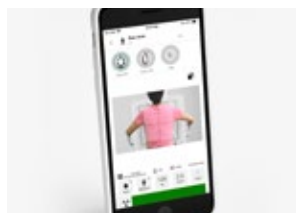
- Automatic detector tracking (BWS mode)
- Vertical travel range: up to 144 cm (56.7")
- Low central beam height: 32 cm (12.6")
- Fixed detector Core static<sup>1</sup>
- Tilting: +90°/-20°

## Table<sup>1</sup>

- Automatic tube tracking (table mode)<sup>1</sup>
- Adjustable height: from 51.5 to 90 cm (20.3" to 35.4")
- High weight capacity: 300 kg (661 lbs)
- Comfortable patient positioning on flat tabletop

## Smart Remote Control<sup>1</sup>

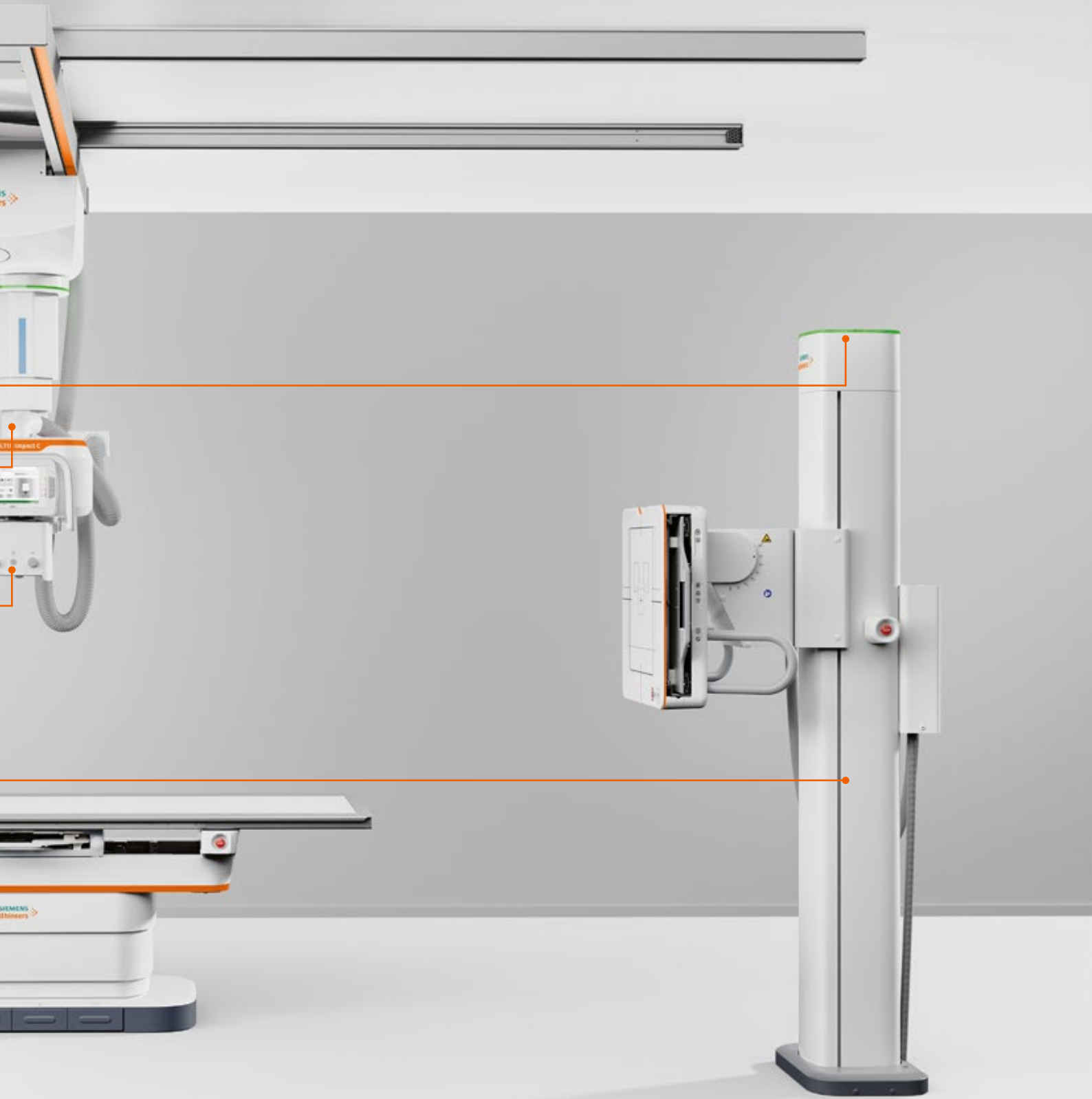
- Access major imaging system functions on the go
- Live-stream of patient status



## Wireless detectors

- MAX wi-D<sup>1</sup> (35 cm x 43 cm/ 14" x 17") with detector sharing
- Core XL (43 cm x 43 cm/ 17" x 17")





### 23.8" all-in-one PC

- Intuitive imaging system
- Fast image flavor setting
- Touchscreen user interface<sup>1</sup>



### Hybrid Image Documentation<sup>1</sup>

Photographic live image of the patient for an optional diagnostic reference

## MULTIX Impact Family

# A system tailored to your needs

Whether it is floor or ceiling-mounted, MULTIX Impact and MULTIX Impact C come in a variety of configurations – from a system designed for chest X-rays to one capable of delivering high-throughput general radiography services.

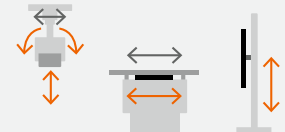
## Stay flexible with two detectors and in-tray charging

With MULTIX Impact systems you can choose between two wireless detectors: Core XL or MAX wi-D<sup>1</sup>. Both detectors feature in-tray charging that can speed up your workflows and reduce wait time. For added convenience, the MAX wi-D can be shared across all other MAX systems. And to increase clinical flexibility, you can combine one wireless detector with Core static<sup>1</sup>, a fixed detector in the Bucky wall stand (BWS).

Upgrades of existing systems to the new VA21 edition are possible with certain preconditions. Please contact your local Siemens Healthineers organization for further details.

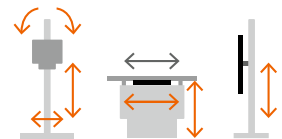
### MULTIX Impact C for high-throughput general X-ray

- myExam 3D Camera<sup>1</sup>
- myExam Collimate<sup>1</sup>
- Core XL or MAX wi-D<sup>1</sup>
- BWS with Core static<sup>1</sup>
- Motorized and tilting BWS
- 80 kW generator<sup>1</sup>
- Elevating table
- Motorized vertical tube movements and tube tilting<sup>1</sup>
- SmartPositioning<sup>1</sup>



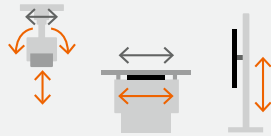
### MULTIX Impact for high-throughput general X-ray

- myExam 3D Camera<sup>1</sup>
- Fully-automated tube stand<sup>1</sup>
- Core XL or MAX wi-D<sup>1</sup>
- BWS with Core static<sup>1</sup>
- Motorized table Bucky<sup>1</sup>
- Elevating table
- Motorized BWS
- myExam Collimate<sup>1</sup>
- SmartMove<sup>1</sup>



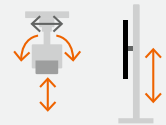
### MULTIX Impact C for general X-ray

- Core XL or MAX wi-D<sup>1</sup>
- Motorized and tilting BWS
- Elevating table
- 65 kW generator upgrade<sup>1</sup>
- Motorized vertical tube movements and tube tilting<sup>1</sup>
- SmartPositioning<sup>1</sup>



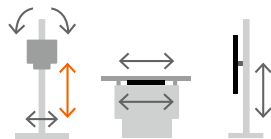
### MULTIX Impact C for chest X-ray

- myExam 3D Camera<sup>1</sup>
- Virtual Collimation<sup>1</sup>
- Auto Thorax Collimation<sup>1</sup>
- Core XL or MAX wi-D<sup>1</sup>
- Motorized and tilting BWS
- 65 kW generator<sup>1</sup>
- Motorized vertical tube movements and tube tilting<sup>1</sup>
- SmartPositioning<sup>1</sup>



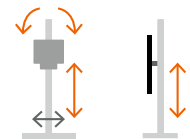
### MULTIX Impact for routine X-ray

- Manual tube stand
- Core XL
- Fixed table for Core XL
- Manual BWS
- Manual collimator



### MULTIX Impact for chest X-ray

- Semi-automated tube stand with motorized tube tilting<sup>1</sup>
- myExam 3D Camera<sup>1</sup>
- Virtual Collimation<sup>1</sup>
- Auto Thorax Collimation<sup>1</sup>
- Core XL
- Motorized BWS



<sup>1</sup> Option

↔ Motorized movement

↔ Manual movement

# Benefit from innovative services

Increasing value by partnering throughout the entire lifetime of your equipment

## Equipment Maintenance and Monitoring

Reliably servicing your MULTIX Impact radiography systems allows you to identify deviations from current norms to maximize equipment availability.

## Education Management

Personalized education and training improves your staff's expertise as well as your equipment's efficiency.

## Fleet Management

A transparent overview of your fleet allows you to manage the performance and maintenance of your Siemens Healthineers equipment 24/7.

## Performance Management

A clear overview of your radiography performance data helps you make prompt and well-informed decisions.

## Asset Management and Planning

Access to innovative medical technology and equipment throughout the entire contract lifetime allows you to maximize your focus on patient care.

## Accessory Solutions

Products from our partner companies complement your equipment in your daily workflow.

## Business Modelling and Financing

Customized business and financial models address your budgetary and enterprise needs and help you stay more competitive.

## Departmental Layout Optimization

3D visualizations and digital twin analyses create more efficient workflows and a more enjoyable work environment.



## Why Siemens Healthineers

At Siemens Healthineers, we pioneer breakthroughs in healthcare. For everyone. Everywhere. By constantly bringing breakthrough innovations to market, we enable healthcare professionals to deliver high-quality care, leading to the best possible outcome for patients.

Our portfolio, spanning from in-vitro and in-vivo diagnostics to image-guided therapy and innovative cancer care, is crucial for clinical decision-making and treatment pathways. With our strengths in patient twinning, precision therapy, as well as digital, data, and artificial intelligence (AI), we are well positioned to take on the biggest challenges in healthcare. We will continue to build on these strengths to help fight the world's most threatening diseases, improving the quality of outcomes, and enabling access to care.

We are a team of 66,000 highly dedicated employees across more than 70 countries passionately pushing the boundaries of what's possible in healthcare to help improve people's lives around the world.

# Fleet Level Benefits

Unlock your potential – and increase the efficiency across your imaging fleet

As healthcare provider you are forced to do more with less, you have to run your radiology department more efficiently. A high level of complexity makes it challenging for you to reach the desired efficiency. Siemens Healthineers offers specific solutions across the entire X-ray portfolio

that let you standardize, analyze, and secure your fleet. Experience consistency, transparency, and confidence as valuable Fleet Level Benefits and improve outcomes, increase efficiency – and achieve greater staff and patient satisfaction.

**Standardize**  
for consistency



**Analyze**  
for transparency

**Secure**  
for confidence



## **Standardize** for consistency

- Systems with highly intuitive user interfaces and standardized workflows
- Staff with consistent knowledge levels
- Consistent image quality and image impressions



## **Analyze** for transparency

- Consolidated data in one place
- Analyzed and evaluated data converted to valuable information



## **Secure** for confidence

- Protect large IT networks and imaging fleets with one cybersecurity philosophy
- Same maintenance cycles and update strategies for the entire fleet

MULTIX Impact VA21 and MULTIX Impact C VA21 featuring myExam 3D Camera, Virtual Collimation, Auto Thorax Collimation, Smart Remote Control, Hybrid Image Documentation, and Auto TOD Measurement are not commercially available in all countries. Their future availability cannot be guaranteed. Please contact your local Siemens Healthineers organization for further details.

On account of certain regional limitations of sales rights and service availability, we cannot guarantee that all products/services/features included in this document are available through the Siemens Healthineers sales organization worldwide. Availability and packaging may vary by country and are subject to change without prior notice.

The information in this document contains general descriptions of the technical options available and may not always apply in individual cases.

Siemens Healthineers reserves the right to modify the design and specifications contained herein without prior notice. Please contact your local Siemens Healthineers sales representative for the most current information.

In the interest of complying with legal requirements concerning the environmental compatibility of our products (protection of natural resources and waste conservation), they may contain recycled components that adhere to the same quality assurance measures used for factory-new components.

---

**Siemens Healthineers Headquarters**

Siemens Healthcare GmbH  
Henkestr. 127  
91052 Erlangen, Germany  
Phone: +49 9131 84-0  
siemens-healthineers.com